

For Lease

Prime Downtown Office for Lease

125 S. Washington Wichita, KS

PROPERTY INFORMATION

Space Available

10,286 SF

Lease Rate

\$14.00/SF/Year

Lease Type

Full Service



CONTACT INFORMATION

Matt Hiatt, MBA

(316) 618-1100

mhiatt@insitere.com

InSite Real Estate Group
608 W. Douglas, Suite 106
Wichita, KS 67203

PROPERTY FEATURES

- ✓ Open Floor Plan On Two Levels
- ✓ ADA Bathrooms Up and Down
- ✓ 10ft Overhead Door at Rear With Storage Area
- ✓ Functional Freight Elevator
- ✓ Break Area On Second Floor
- ✓ Centrally Located in Downtown Wichita Near Old Town
- ✓ Great Highway Access to US-54 (Kellogg) & I-135
- ✓ Modern Feel Combining Exposed Brick and Concrete With Updated Carpet and Lighting
- ✓ Plenty Of Parking Available



Like/Follow us!



InSite
REAL • ESTATE • GROUP

For Lease

Prime Downtown Office for Lease

125 S. Washington Wichita, KS

PROPERTY INFORMATION

Space Available

10,286 SF

Lease Rate

\$14.00/SF/Year

Lease Type

Full Service

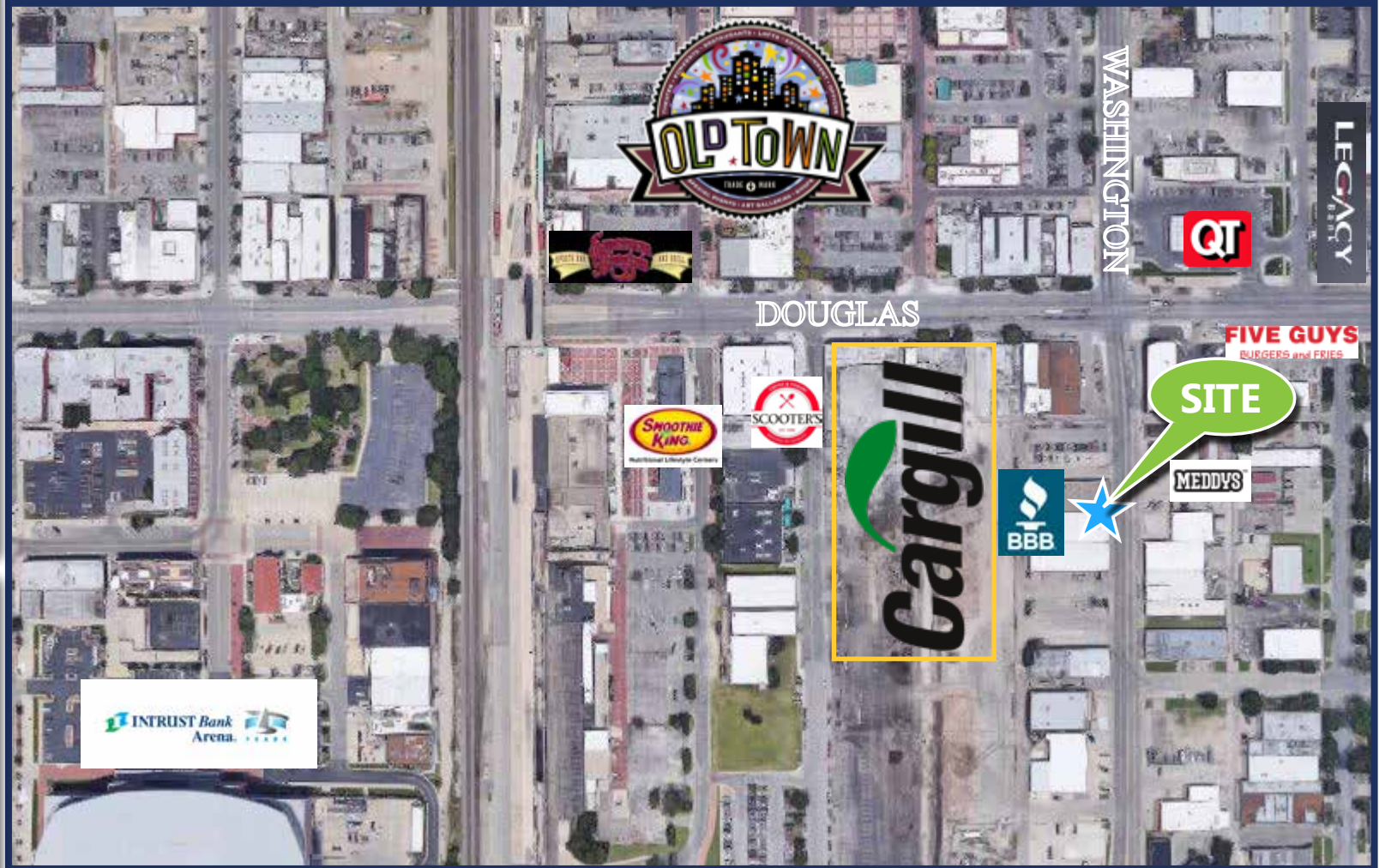
CONTACT INFORMATION

Matt Hiatt, MBA

(316) 618-1100

mhiatt@insitere.com

InSite Real Estate Group
608 W. Douglas, Suite 106
Wichita, KS 67203



AREA NEIGHBORS

New Downtown Cargill Building
QuikTrip
Old Town
Emerson Biggins
Better Business Bureau (co-tenants)

Meddy's
Smoothie King
Scooter's Coffee
Five Guys Burgers and Fries
Intrust Bank Arena

Like/Follow us!
 **InSite**
REAL • ESTATE • GROUP